

REBEL CREEK ANGUS

BULL SALE

GET READY FOR OUR *Live* AUCTION
AT POLLOCKVILLE, AB

APRIL 8TH, 2023 2PM

WELCOME

Welcome to our 2023 bull sale! We are proud to offer another great set of bulls that will help you build on the successes from your previous Rebel Creek purchases. This year we are returning to the live auction after a two year hiatus, so we are happy to have Ross Annett back, and he will also be handling the online bidding on his website [auctions.tdown.ca](https://www.auctions.tdown.ca). The bulls have been backgrounded on a light barley, hay and silage ration and are in fleshed, but not fat body condition, just how you will need them to be ready for breeding season.

What we do is make bulls that will enhance your females, increased calf gains, feedlot performance and quality of meat. Enhancing your cows comes from hard culling and never giving any cow a free pass for sub standard traits like feet, udder and temperament, the best way to trim a hoof is a trip to the packing plant, in my opinion. The other performance traits can only be improved generation after generation by using as many of the testing platforms as we can, such as DNA testing, ultrasound, and weight submission through the Canadian Angus, so we do that for every animal born.

Our sire lineup continues to use proven bulls with genetics that work, as well as using new sires to offer you new opportunities to provide increased vigor to the herd. The new bull in the lineup this year is RAML Payload 9500, and his sons are among the best performers. This combination has given us a herd that is well suited for the harsh environment of the Special Areas in Alberta. Our commercial herd uses only Rebel Creek Angus bulls, and we take all our steers to finished market, with a high percentage of them earning extra premiums. Three of our children are in the Provincial 4H Carcass project, and out of 130+ steers in the program, our Rebel Creek bulls had 3 steers in the top 8 in the province! This proves that selecting for function, and performance with lots of data in support, make for a very strong bottom line.

I just want to thank all our customers that return year after year to support our program, you are the people that really keep us going and motivated to make this what it is. We always strive to produce a bull that you will be proud to have stand in your field, and we will always stand beside our product and offer solutions for the bulls that don't become as good as we felt they should have been.

We hope to see you soon!

Sincerely,

The Rooke Family

Calvin, Catherine, Abby, Evan, Evelyn, & Charlotte



Rebel Creek Angus
Box 5 Pollockville, AB T0J 2L0

SALE INFO

LIVE VIDEO AUCTION APRIL 8, 2023 2PM HARDGRASS HUB | POLLOCKVILLE, AB

Bull viewing will be held at the Ranch 2 miles NE of Pollockville, AB.
Check the website at rebelcreekangus.com for any updates or changes.

SALE DAY PHONES:

Colin McNiven	Calvin Rooke	Catherine Rooke	Buck Christman
403.633.1699	403.633.2726	403.501.4634	403.633.1205

ONLINE BIDDING

**ANNETT AUCTIONS AT
AUCTIONS.TDOWN.CA**

sign up in advance to ensure you are
able to bid on sale day if you are
unable to attend in person

**PLEASE ARRIVE EARLY SALE DAY
TO ENSURE YOU ARE
REGISTERED AND APPROVED
FOR BIDDING**

VIEWING OF THE CATTLE: All bulls
and heifers are available to be viewed at
the Ranch any day leading up to the sale
day, and on sale day.

HEALTH: All bulls have been vaccinated
with Fusogard, Bovashield, and Covexin
prior to sale day. All Livestock in the
sale are cared for under the certified
Cattle Management Solutions total herd
health program under the guidance of
Blake Balog.

TERMS & CONDITIONS

All sales shall be final and binding.

Payment of livestock sold during the sale shall be paid in full to Rebel Creek Angus prior to delivery unless otherwise arranged. Transfer and Registration papers will be paid by the seller, and that no costs of the same be incurred by the purchaser.

All bulls are guaranteed to have passed a semen test performed by a licensed veterinarian and be a sound breeder. Any bull that has not passed a semen test at the time of sale will be declared prior to sale day. These bulls will be kept at Rebel Creek Angus at no additional cost to the buyer and will not be delivered until they have past a semen test. If the bull does not pass a semen test the bull will be refunded at the request of the purchaser. Any bull who has passed the breeding evaluation is eligible to be insured and is the responsibility of the purchaser to procure insurance, and it will not be the responsibility of Rebel Creek Angus to cover any injury or negative reproductive situations that may arise.

Rebel Creek Angus will not be liable for more than the purchase price of the bull.

All bulls will be delivered in the week following the sale. If the buyer cannot accept the bull immediately, a feeding charge will be made for each week the bull remains at Rebel Creek Angus, excluding bulls that did not pass a semen evaluation. Contact information and delivery instructions must be provided on sale day. Delivery within 200km of Pollockville will be at no cost to the purchaser.

The buyer is responsible for acquiring bull insurance. Rebel Creek Angus will not be responsible to compensate for any injury or death occurring to the bull prior to delivery. Any bull who has passed the breeding evaluation is eligible to be insured and is the responsibility of the purchaser to procure insurance, and it will not be the responsibility of Rebel Creek Angus to cover any injury or negative reproductive situations that may arise.

All bulls are available for viewing at the Ranch prior and during the sale. Rebel Creek Angus will not be responsible for any injuries or sickness that may occur from being on the premise. Rebel Creek Angus will accept no responsibility any actions of the visitors.

Rebel Creek Angus reserves the right to collect semen of any bull for in herd use only at the sellers' expense and the buyers convenience.

REBEL CREEK 2023 RED ANGUS BULL SALE



REF
SIRE

RED 9 MILE *Franchise* 6305 2017139 02/03/2016 IMP 305D

BW
ADJ205
ADJ 365
CB INDEX
285

-A real female maker, his daughters excel in udder quality and maternal broody appearance
-Superb calving ease, among the top of the breed

SPUR FRANCHISE 7070
SPUR FRANCHISE OF GARTON
H & H IRENE LASS 0135

RED TR COLT 45 UT806
RED C-BAR ABIGRACE Y11
RED C-BAR & BROWN ABIGRACET714

	CE	BW	WW	YW	RADZ	DMI	SCR	DOC	CLAW	ANGLE	CW	MARB	REA	FAT	HPG	MCE	MILK	MW	MH
EPD	9.0	-2.5	42	81	0.20	0.70	0.72	14	0.38	0.45	25	0.48	0.70	0.019	15	3.0	38	14	0.0
ACC	62	82	77	64	34	34	46	26	26	26	40	34	35	32	21	43	37	37	38
RANK	10	4	40	20	40	85	45	45	20	20	45	6	3	90	1	75	1	85	80



REF
SIRE

RED REBEL CREEK *Flash Bang* 12F 2023595 27/02/2018 ROOK 12F

BW
91
ADJ205
721
ADJ 365
1225
CB INDEX
170

-A home grown sire, his son's and daughters have been really impressive
-Top growth and carcass GE EPD's, he adds size, dimension and quality
-His dam has great feet, and a perfect udder
-He is an Impala son, and his quality has been exceeding his sire

RED TR ROLLS ROYCE 44B
RED TR IMPALA 167D
RED TR MS PATHY 720X

TER-RON PARK PLACE 18Y
RED REBEL CREEK ASPEN 415B
RED TG FANCY 203X

	CE	BW	WW	YW	RADZ	DMI	SCR	DOC	CLAW	ANGLE	CW	MARB	REA	FAT	HPG	MCE	MILK	MW	MH
EPD	-6.0	3.7	51	88	0.20	0.72	1.04	11	0.61	0.58	46	0.34	0.56	-0.010	7	4.0	21	68	0.6
ACC	34	73	67	53	31	31	49	23	22	22	41	36	38	34	13	26	29	37	35
RANK	95	90	15	10	40	85	15	65	99	94	2	20	10	25	85	70	85	10	10

REBEL CREEK 2023 RED ANGUS BULL SALE



REF
SIRE

RED LWNBRG *Harvester* 132E 1968397 21/02/2017 TED 132E

BW
91
ADJ205
873
ADJ 365
1443
CB INDEX
246

-Harvester adds length and width, and great foot and leg structure
-Top WW and YW, the prodigy will add to your bottom line

TED HARVESTOR 154A
RED LWNBRG HARVESTOR 103C
RED LWNBRG CADENCE 141Y

RED TED CATALYST 107T
RED TED CATALYST 63Y
RED TED COMBINATION 40T

	CE	BW	WW	YW	RADZ	DMI	SCR	DOC	CLAW	ANGLE	CW	MARB	REA	FAT	HPG	MCE	MILK	MW	MH
EPD	-1.0	2.4	56	94	0.19	0.57	0.82	4	0.38	0.45	38	0.34	0.66	0.0005	9	9.0	21	44	0.2
ACC	30	63	55	39	20	20	22	5	5	5	30	22	29	22	5	23	23	19	16
RANK	75	70	6*	7*	50	75	35	94	20	20	8*	20	5*	65	65	15*	85	4*	60



REF
SIRE

RED GEMSTONE 24B *Lad* 256F 2087462 02/05/2018 KGA 256F

BW
72
ADJ205
596
ADJ 365
1007
CB INDEX
241

-The top selling bull from Gemstone's 2019 sale, he combines excellent calving ease with performance
-Great foot and leg structure, and a strong muscled phenotype

RED HILL B571 JULIAN 84S
CALVO JULIAN 24B
CALVO STELLA Y443

RED ML 876 MAX 030X
RED GEMSTONE 30X LASS 56C
RED TOP GRADE PERFECTION 214A

	CE	BW	WW	YW	RADZ	DMI	SCR	DOC	CLAW	ANGLE	CW	MARB	REA	FAT	HPG	MCE	MILK	MW	MH
EPD	4.0	0.0	58	96	0.19	0.88	1.16	12	0.38	0.38	30	0.23	0.21	0.0004	10	9.0	21	52	0.3
ACC	35	55	48	33	17	17	5	5	5	5	25	17	23	19	5	11	12	16	14
RANK	40	25	4*	5*	50	92	10*	60	20	2*	25	45	85	65	45	15*	85	30	45

REFERENCE SIRES

REBEL CREEK 2023 RED ANGUS BULL SALE



RED RAML *Payload* 9500 2141837 06/01/2019 IMP 9500G

BW
ADJ205
ADJ 365
CB INDEX
233

- Phenotypic standout! Great body design being stout-featured and massive yet has a smooth, attractive look with impeccable foot structure and soundness
- Will improve the udder quality, foot structure and carcass traits in potential matings
- Backed by cow power stemming from his majestic Conquest dam
- Checks all the boxes! His sons will have unlimited mating flexibility
- Check out Payload sons in this sale, not only do they stand out with some of the best epd lines we've had, but many standouts in the bull pen as well.

RED SLGN WIDELOAD 920W **RED HXC CONQUEST 4405P**
RED PELTON WIDELOAD 78B **RED RAML CHEROKEE MAIDEN 500**
RED PELTON MISS JAYLA 0508S **RED WDJ SRV FASHION 1135**

	CE	BW	WW	YW	RADZ	DMI	SCR	DOC	CLAW	ANGLE	CW	MARB	REA	FAT	HPG	MCE	MILK	MW	MH
EPD	5.0	0.6	50	89	0.22	0.26	1.37	8	0.51	0.55	31	0.29	0.65	-0.012	9	8.0	26	54	0.3
ACC	42	72	66	40	25	25	29	18	11	11	32	22	24	19	8	14	16	28	29
RANK	35	40	15*	10*	20	40	5*	80	90	85	25	30	6*	20	65	25	30	25	45



RED TR *Impala* 167D 1937348 28/02/2016 CBT 167D

BW
82
ADJ205
718
ADJ 365
1362
CB INDEX
226

- Impala has been part of our lineup for the a few years now, he has made fleshy powerful sons and daughters with great feet and udders
- The availability of Impala sons is becoming limited, so don't miss on your last few chances

RED BIEBER ROLLIN DEEP Y118 **RED TR ESCALADE 318T**
RED TR ROLLS ROYCE 44B **RED TR MS PATHY 720X**
RED TR DOLL TARA 340S **TR MISS PATHY 416T***

	CE	BW	WW	YW	RADZ	DMI	SCR	DOC	CLAW	ANGLE	CW	MARB	REA	FAT	HPG	MCE	MILK	MW	MH
EPD	-9.0	6.6	50	96	0.24	0.78	0.95	14	0.34	0.48	45	0.56	0.39	-0.024	10	1.0	23	89	0.8
ACC	36	81	77	57	25	25	53	5	31	31	35	27	34	26	5	40	41	38	23
RANK	98	99	15*	5*	8*	85	20	45	9*	40	2*	3*	45	7*	45	90	65	2*	4*

REBEL CREEK 2023 RED ANGUS BULL SALE



REF
SIRE

S A V *Rainfall* 6846

2013656 09/01/2016 IMP 6846D

BW
ADJ205
ADJ 365
CB INDEX
358

-A great calving ease sire with great BW and CED EPD's
-He sires added length, soundness and unmistakable herd bull presence in his sons, His daughters are stunning in an elegant maternal package.
-Rainfall sets himself apart with his dominating hip and rear leg structure with muscle shape and flawless phenotype

O C C PAXTON 730P
COLEMAN CHARLO 0256
BOHI ABIGALE 6014

S A V 8180 TRAVELER 004
S A V BLACKCAP MAY 4136
S A V MAY 2397

	CE	BW	WW	YW	RADZ	DMI	SCR	DOC	CLAW	ANGLE	CW	MARB	REA	FAT	HPG	MCE	MILK	MW	MH
EPD	8.0	0.4	55	107	0.28	0.82	0.88	13	0.33	0.39	20	0.63	0.63	0.05	15	7.0	26	18	-0.4
ACC	92	97	96	93	56	56	93	89	82	81	69	66	63	66	73	82	78	60	60
RANK	*15	*15	40	20	*10	45	45	70	*5	*10	94	20	25	30	*3	50	30	92	97

DOUBLE A SUPPLEMENTS LTD.
Box 930 Hanna, AB
T0J 1P0

Andy Andrus
403-633-2468

REF
SIRE

RED BENCHMARK *For Profit* 51'19 2105208 12/05/2019 BFR 51G

BW
80
ADJ205
576
ADJ 365
1232
CB INDEX
229

-Profit provides both calving ease, performance and carcass trait, his sons will do a lot of good things for you

RED H2R PROFITBUILDER B403
RED LIKE IT PROFIT BUILDER 7215E
RED TBJR REBELLA 409

RED DUNN BETTER A500
RED BENCHMARK FIREFLY 77'15
RED BENCHMARK FIREFLY 65'12

	CE	BW	WW	YW	RADZ	DMI	SCR	DOC	CLAW	ANGLE	CW	MARB	REA	FAT	HPG	MCE	MILK	MW	MH
EPD	10	-2.0	48	83	0.21	0.60	1.50	21	0.38	0.45	23	0.74	0.14	0.014	4	9.0	30	56	0.4
ACC	32	68	61	40	36	36	44	21	22	22	38	30	32	28	11	22	25	32	32
RANK	*9	*7	20	20	25	75	*2	*7	20	20	55	*1	95	85	99	*15	*6	25	35

REFERENCE SIRES

REBEL CREEK 2023 RED ANGUS BULL SALE



02K

RED REBEL CREEK

Kona

02K

2256559

24-02-2022

ROOK 02K

ULTRASOUND DATA		RATIO
BW	77	
ADJ205	624	RIBEYE
		15.39
ADJ 365	1081	ADJ %IMF
		4.41
GAIN	2.86	RIB FAT
		0.28
FRAME	5	RUMP FAT
		0.3
PROJ SC	35.5	CB INDEX
		290

RED LIKE IT PROFIT BUILDER 7215E

TER-RON PARK PLACE 18Y

RED BENCHMARK FOR PROFIT 51'19

RED REBEL CREEK RAPUNZEL 411B

RED BENCHMARK FIREFLY 77'15

RED TG ECHETA 65T

	CE	BW	WW	YW	RADZ	DMI	SCR	DOC	CLAW	ANGLE	CW	MARB	REA	FAT	HPG	MCE	MILK	MW	MH
EPD	10	-1.2	54	87	0.21	0.34	0.55	27	0.33	0.33	20	0.64	0.52	-0.009	8	7	23	54	0.3
ACC	27	49	42	31	25	25	31	21	18	19	32	26	27	23	11	20	24	29	30
RANK	7	14	9	14	23	52	64	1	6	1	65	2	18	29	86	28	58	28	40



03K

RED REBEL CREEK

Kinetic

03K

2256557

23-02-2022

ROOK 03K

ULTRASOUND DATA		RATIO
BW	88	
ADJ205	635	RIBEYE
		14.67
ADJ 365	1145	ADJ %IMF
		3.65
GAIN	3.19	RIB FAT
		0.24
FRAME	5.5	RUMP FAT
		0.27
PROJ SC	38	CB INDEX
		239

RED LIKE IT PROFIT BUILDER 7215E

RED LAZY MC BENELLI 102B

RED BENCHMARK FOR PROFIT 51'19

RED REBEL CREEK BEN GP 723E

RED BENCHMARK FIREFLY 77'15

RED REBEL CREEK ANGELA 433B

	CE	BW	WW	YW	RADZ	DMI	SCR	DOC	CLAW	ANGLE	CW	MARB	REA	FAT	HPG	MCE	MILK	MW	MH
EPD	8	-1.2	34	57	0.18	-0.09	1.15	13	0.31	0.43	18	0.43	0.5	-0.019	8	9	31	27	0
ACC	27	49	42	31	25	25	32	21	19	19	32	27	28	23	10	20	23	30	30
RANK	14	14	72	75	59	13	12	49	3	12	71	11	22	12	79	12	3	72	78

REBEL CREEK 2023 RED ANGUS BULL SALE



ULTRASOUND DATA		RATIO
BW 89	LMY 61.4	
ADJ205 678	RIBEYE 12.88	106
ADJ 365 1126	ADJ %IMF 4.24	97
GAIN 2.8	RIB FAT 0.3	118
FRAME 6.7	RUMP FAT 0.21	77
PROJ SC 41.5	CB INDEX 223	

04K

RED REBEL CREEK

Kruger

04K 2256743

24-02-2022

ROOK 04K

RED PELTON WIDELOAD 78B
RED RAML PAYLOAD 9500 DDF
RED RAML CHEROKEE MAIDEN 500

RED BAD LANDS ATTRACTION 3A
RED BAD LANDS LASS 531C
RED BAD LANDS LASS 9009W

	CE	BW	WW	YW	RADZ	DMI	SCR	DOC	CLAW	ANGLE	CW	MARB	REA	FAT	HPG	MCE	MILK	MW	MH
EPD	5	0.5	53	88	0.2	0.54	1.58	25	0.48	0.49	30	0.26	0.47	0.004	5	5	26	52	0.5
ACC	27	49	42	28	21	21	27	20	16	16	31	24	25	20	9	18	21	27	29
RANK	31	37	*10	*12	33	74	*2	*2	75	42	26	38	28	64	99	51	24	31	16



ULTRASOUND DATA		RATIO
BW 98	LMY 63.1	
ADJ205 662	RIBEYE 11.7	96
ADJ 365 1060	ADJ %IMF 4.45	102
GAIN 3.11	RIB FAT 0.2	79
FRAME 5.7	RUMP FAT 0.21	77
PROJ SC 33	CB INDEX 179	

06K

RED REBEL CREEK

Kraker

06K 2256564

25-02-2022

ROOK 06K

RED TR IMPALA 167D
RED REBEL CREEK FLASH BANG 12F
RED REBEL CREEK ASPEN 415B

RED DKF RAZOR 55C
RED REBEL CREEK RAZ SAK 831F
RED REBEL CREEK SMS FL 516C

	CE	BW	WW	YW	RADZ	DMI	SCR	DOC	CLAW	ANGLE	CW	MARB	REA	FAT	HPG	MCE	MILK	MW	MH
EPD	-5	4.4	65	117	0.27	1.35	0.85	12	0.63	0.51	54	0.15	0.31	-0.024	7	4	20	110	1.5
ACC	27	49	42	32	23	23	32	22	19	19	33	28	29	24	12	21	23	29	30
RANK	92	95	*1	*1	*1	99	31	56	99	57	*1	67	70	*7	88	62	86	*1	*1

YEARLING BULLS

REBEL CREEK 2023 RED ANGUS BULL SALE



07K

REBEL CREEK *Kaleidoscope* 07K 2256570 26-02-2022 ROOK 07K

ULTRASOUND DATA		RATIO
BW	108	
LMY	63.3	
ADJ205	710	RIBEYE 109
ADJ 365	1249	ADJ %IMF 86
GAIN	3.37	RIB FAT 95
FRAME	5.3	RUMP FAT 102
PROJ SC	36.5	CB INDEX 383

COLEMAN CHARLO 0256

PVF INSIGHT 0129

S A V RAINFALL 6846

REBEL CREEK INS PP 827F

S A V BLACKCAP MAY 4136 CAF

REBEL CREEK PP ML 512C

	CE	BW	WW	YW	RAZ	DMI	SCR	DOC	CLAW	ANGLE	CW	MARB	REA	FAT	HPG	MCE	MILK	MW	MH
EPD	0	3.5	73	136	0.36	0.8	0.25	5	0.41	0.34	56	0.3	1.17	-0.05	16	1	32	68	0.3
ACC	34	52	45	36	30	30	37	33	29	29	40	35	35	31	24	29	32	35	37
RANK	76	81	4*	2*	1*	49	93	96	29	4*	12*	70	1*	1*	2*	94	3*	35	52



08K

RED REBEL CREEK *Kingdom* 08K 2256571 26-02-2022 ROOK 08K

ULTRASOUND DATA		RATIO
BW	74	
LMY	60.4	
ADJ205	615	RIBEYE 101
ADJ 365	1069	ADJ %IMF 124
GAIN	3.84	RIB FAT 126
FRAME	4.8	RUMP FAT 117
PROJ SC	39.5	CB INDEX 201

RED LIKE IT PROFIT BUILDER 7215E

RED TR IMPALA 167D

RED BENCHMARK FOR PROFIT 51'19

RED REBEL CREEK IMP WT 846F

RED BENCHMARK FIREFLY 77'15

RED TOP GRADE ZELDA 13Z

	CE	BW	WW	YW	RAZ	DMI	SCR	DOC	CLAW	ANGLE	CW	MARB	REA	FAT	HPG	MCE	MILK	MW	MH
EPD	6	-1.1	32	59	0.18	0.35	1.41	19	0.38	0.45	14	0.53	0.11	-0.04	9	4	27	45	0.3
ACC	27	50	42	30	25	25	32	22	20	19	33	27	28	23	11	21	23	30	30
RANK	24	15	78	71	59	53	4*	12*	21	18	82	5*	97	41	60	62	16	41	40

REBEL CREEK 2023 RED ANGUS BULL SALE



		ULTRASOUND DATA	RATIO
BW	84	LMY	61.2
ADJ205	649	RIBEYE	97
ADJ 365	1134	ADJ %IMF	108
GAIN	3.03	RIB FAT	105
FRAME	5.5	RUMP FAT	108
PROJ SC	36.5	CB INDEX	137

09K

RED REBEL CREEK *Korn* 09K 2256572 26-02-2022 ROOK 09K

RED TR IMPALA 167D

RED REBEL CREEK FLASH BANG 12F

RED REBEL CREEK ASPEN 415B

RED COUNT RIDGE GRAND PLAN 29Z

RED REBEL CREEK PINKA 422B

RED TG PERFECTION 195U

	CE	BW	WW	YW	RADZ	DMI	SCR	DOC	CLAW	ANGLE	CW	MARB	REA	FAT	HPG	MCE	MILK	MW	MH
EPD	0	0.2	34	56	0.15	0.21	0.18	3	0.55	0.64	21	-0.04	0.46	0.09	8	7	25	28	0.2
ACC	24	47	40	32	21	21	31	19	17	18	31	25	27	22	8	19	23	28	28
RANK	68	32	72	76	88	37	91	95	97	99	61	94	30	76	84	28	34	70	54



		ULTRASOUND DATA	RATIO
BW	69	LMY	62.3
ADJ205	588	RIBEYE	92
ADJ 365	1087	ADJ %IMF	106
GAIN	3.11	RIB FAT	83
FRAME	5.3	RUMP FAT	98
PROJ SC	33	CB INDEX	247

11K

RED REBEL CREEK *Krauss* 11K 2256575 27-02-2022 ROOK 11K

SPUR FRANCHISE OF GARTON

RED 9 MILE FRANCHISE 630S

RED C-BAR ABIGRACE Y11

RED BROWN JYJ REDEMPTION Y1334

RED REBEL CREEK RE BS 605D

RED REBEL CREEK MELODY 412B

	CE	BW	WW	YW	RADZ	DMI	SCR	DOC	CLAW	ANGLE	CW	MARB	REA	FAT	HPG	MCE	MILK	MW	MH
EPD	16	-4.2	40	78	0.23	0.47	0.23	16	0.44	0.47	33	0.34	0.28	0.02	9	13	29	33	0
ACC	31	50	42	34	23	23	31	21	19	20	32	27	28	23	13	24	25	29	30
RANK	1	1	50	28	10	67	89	27	52	28	17	22	77	91	67	1	7	63	78

YEARLING BULLS

REBEL CREEK 2023 RED ANGUS BULL SALE



12K

REBEL CREEK

Kerbuffle

12K 2256577

27-02-2022

ROOK 12K

		ULTRASOUND DATA	RATIO
BW	85	LMY	63.1
ADJ205	647	RIBEYE	105
ADJ 365	1177	ADJ %IMF	115
GAIN	3.31	RIB FAT	96
FRAME	5	RUMP FAT	113
PROJ SC	35.5	CB INDEX	254

COLEMAN CHARLO 0256

RED DKF RAZOR 55C

S A V RAINFALL 6846

RED REBEL CREEK RAZ SH 20'28H

S A V BLACKCAP MAY 4136 CAF

RED REBEL CREEK SH WN 515C

	CE	BW	WW	YW	RADZ	DMI	SCR	DOC	CLAW	ANGLE	CW	MARB	REA	FAT	HPG	MCE	MILK	MW	MH
EPD	-4	3.5	64	116	0.25	1.36	0.49	8	0.43	0.54	38	0.4	0.47	0.09	10	2	24	48	0.2
ACC	36	52	45	36	29	29	37	31	27	27	39	34	34	30	23	30	31	34	36
RANK	89	88	*2	*1	*3	99	70	80	46	75	*8	*14	28	76	39	81	46	37	54



13K

RED REBEL CREEK

Kletschko

13K 2256578

27-02-2022

ROOK 13K

		ULTRASOUND DATA	RATIO
BW	71	LMY	60.5
ADJ205	604	RIBEYE	84
ADJ 365	1072	ADJ %IMF	85
GAIN	2.93	RIB FAT	104
FRAME	5.8	RUMP FAT	75
PROJ SC	38	CB INDEX	231

SPUR FRANCHISE OF GARTON

RED LAZY MC FORESIGHT 185B

RED 9 MILE FRANCHISE 6305

RED REBEL CREEK FS BS 20'60H

RED C-BAR ABRIGRACE Y11

RED REBEL CREEK BS MS 507C

	CE	BW	WW	YW	RADZ	DMI	SCR	DOC	CLAW	ANGLE	CW	MARB	REA	FAT	HPG	MCE	MILK	MW	MH
EPD	12	-1.8	40	69	0.18	0.14	0.62	21	0.43	0.43	32	0.15	0.39	0.021	9	10	33	37	0.6
ACC	33	49	42	32	23	23	31	21	18	18	32	27	28	23	12	24	24	28	30
RANK	*3	*9	50	48	59	30	56	*6	46	*12	20	67	48	92	60	*7	*1	57	*10

REBEL CREEK 2023 RED ANGUS BULL SALE



BW 86	ULTRASOUND DATA	RATIO
ADJ205 655	LMY 63	
	RIBEYE	108
ADJ 365 1167	ADJ %IMF	86
GAIN 3.2	RIB FAT	100
FRAME 6.3	RUMP FAT	75
PROJ SC 37.5	CB INDEX 232	

14K

RED REBEL CREEK *Ketchup* 14K 2256757 28-02-2022 ROOK 14K

RED PELTON WIDELOAD 78B
RED RAML PAYLOAD 9500
RED RAML CHEROKEE MAIDEN 500

RED TR IMPALA 167D
RED REBEL CREEK IMP RE 20'23H
RED REBEL CREEK RE RAS 709E

	CE	BW	WW	YW	RADZ	DMI	SCR	DOC	CLAW	ANGLE	CW	MARB	REA	FAT	HPG	MCE	MILK	MW	MH
EPD	5	1.1	39	69	0.2	0.14	1.51	6	0.37	0.57	19	0.41	0.27	-0.011	9	8	26	21	-0.1
ACC	31	49	42	29	22	22	28	21	16	16	32	25	26	22	10	18	20	27	29
RANK	31	48	54	48	33	30	2*	87	16	90	68	13*	79	25	62	19	24	80	85



BW 80	ULTRASOUND DATA	RATIO
ADJ205 521	LMY 62.5	
	RIBEYE	90
ADJ 365 1042	ADJ %IMF	107
GAIN 3.26	RIB FAT	75
FRAME 5.3	RUMP FAT	81
PROJ SC 37.5	CB INDEX 249	

15K

RED REBEL CREEK *Knot* 15K 2256758 28-02-2022 ROOK 15K

RED PELTON WIDELOAD 78B
RED RAML PAYLOAD 9500
RED RAML CHEROKEE MAIDEN 500

RED BROWN JYJ REDEMPTION Y1334
RED REBEL CREEK RE PP 724E
RED REBEL CREEK RAPUNZEL 423B

	CE	BW	WW	YW	RADZ	DMI	SCR	DOC	CLAW	ANGLE	CW	MARB	REA	FAT	HPG	MCE	MILK	MW	MH
EPD	9	-1.5	39	69	0.24	-0.34	1.42	20	0.46	0.55	28	0.09	0.45	-0.006	9	10	25	42	0.2
ACC	27	47	40	29	21	21	27	20	16	16	31	24	25	21	10	18	20	27	28
RANK	10*	11*	54	48	6*	5*	4*	9*	63	81	34	79	32	37	70	7*	34	47	54

REBEL CREEK 2023 RED ANGUS BULL SALE



BW 99	ULTRASOUND DATA	RATIO
ADJ205 675	LMY 61.4	
ADJ 365 1216	RIBEYE 11.55	95
GAIN 3.38	ADJ %IMF 4.33	99
FRAME 6.5	RIB FAT 0.26	103
PROJ SC 40	RUMP FAT 0.37	135
	CB INDEX 189	

17K

RED REBEL CREEK *Karate* 17K 2256639 28-02-2022 ROOK 17K

RED LIKE IT PROFIT BUILDER 7215E **RED LAZY MC FORESIGHT 185B**
RED BENCHMARK FOR PROFIT 51'19 **RED REBEL CREEK FS FL 954G**
RED BENCHMARK FIREFLY 77'15 **RED TG LARK 153W**

	CE	BW	WW	YW	RADZ	DMI	SCR	DOC	CLAW	ANGLE	CW	MARB	REA	FAT	HPG	MCE	MILK	MW	MH
EPD	-4	3.8	54	96	0.23	0.71	0.87	5	0.37	0.45	31	0.2	0.31	-0.01	3	3	26	76	0.9
ACC	26	49	42	30	24	24	31	21	17	17	32	27	28	23	11	20	22	28	30
RANK	89	91	9	6	10	87	29	91	16	18	23	55	70	27	99	72	24	7	2



BW 81	ULTRASOUND DATA	RATIO
ADJ205 612	LMY 60.8	
ADJ 365 1079	RIBEYE 10.84	89
GAIN 2.92	ADJ %IMF 4.29	98
FRAME 5	RIB FAT 0.26	103
PROJ SC 34.5	RUMP FAT 0.3	109
	CB INDEX 219	

18K

RED REBEL CREEK *Knife* 18K 2256640 28-02-2022 ROOK 18K

RED LIKE IT PROFIT BUILDER 7215E **RED COUNT RIDGE GRAND PLAN 29Z**
RED BENCHMARK FOR PROFIT 51'19 **RED REBEL CREEK GP SM 534C**
RED BENCHMARK FIREFLY 77'15 **RED TG DONNA 235T**

	CE	BW	WW	YW	RADZ	DMI	SCR	DOC	CLAW	ANGLE	CW	MARB	REA	FAT	HPG	MCE	MILK	MW	MH
EPD	10	-2.3	35	60	0.17	0.27	0.67	17	0.36	0.4	19	0.3	0.18	0.01	7	11	28	16	-0.1
ACC	27	50	42	32	25	25	32	22	20	20	33	27	28	24	11	21	24	30	31
RANK	7	6	69	69	70	43	51	21	13	4	68	29	92	78	91	4	11	85	85

REBEL CREEK 2023 RED ANGUS BULL SALE



BW 88	ULTRASOUND DATA	RATIO
ADJ205 664	LMY 64.7	
ADJ 365 1211	RIBEYE 13.36	110
GAIN 3.41	ADJ %IMF 4.33	99
FRAME 5.5	RIB FAT 0.19	75
PROJ SC 36	RUMP FAT 0.26	95
	CB INDEX 231	

19K

RED REBEL CREEK *Kreative* 19K 2256644 01-03-2022 ROOK 19K

SPUR FRANCHISE OF GARTON
RED 9 MILE FRANCHISE 6305
RED C-BAR ABIGRACE Y11

RED REBEL CREEK BOARDWALK 16B
RED REBEL CREEK BW MS 826F
RED TOP GRADE DEANNA 265A

	CE	BW	WW	YW	RADZ	DMI	SCR	DOC	CLAW	ANGLE	CW	MARB	REA	FAT	HPG	MCE	MILK	MW	MH
EPD	3	0.4	49	93	0.22	0.99	0.23	13	0.48	0.48	37	0.1	0.47	-0.06	15	6	36	62	0.4
ACC	30	50	43	33	23	23	31	22	20	20	33	27	28	23	13	24	25	29	30
RANK	46	35	19	*8	16	97	89	49	75	33	*9	77	28	37	*1	39	*1	17	26



BW 84	ULTRASOUND DATA	RATIO
ADJ205 649	LMY 61.3	
ADJ 365 1084	RIBEYE 12.06	99
GAIN 2.72	ADJ %IMF 5.01	115
FRAME 5.3	RIB FAT 0.28	110
PROJ SC 35	RUMP FAT 0.24	87
	CB INDEX 207	

20K

RED REBEL CREEK *Kelowna* 20K 2256645 01-03-2022 ROOK 20K

RED LIKE IT PROFIT BUILDER 7215E
RED BENCHMARK FOR PROFIT 51'19
RED BENCHMARK FIREFLY 77'15

RED FEDES BIG SKY R9
RED TG FANCY 203X
RED TG FANCY 203U

	CE	BW	WW	YW	RADZ	DMI	SCR	DOC	CLAW	ANGLE	CW	MARB	REA	FAT	HPG	MCE	MILK	MW	MH
EPD	8	-1.2	38	57	0.15	-0.11	0.01	15	0.41	0.47	17	0.18	0.27	-0.01	8	11	29	23	0.3
ACC	27	50	42	31	25	25	33	22	18	18	33	27	28	24	12	21	25	29	30
RANK	*14	*14	58	75	88	*11	96	34	35	28	74	60	79	51	85	*4	*7	77	40

REBEL CREEK 2023 RED ANGUS BULL SALE



21K

RED REBEL CREEK *Kodiak* 21K 2256646 01-03-2022 ROOK 21K

ULTRASOUND DATA		RATIO
BW	98	
LMY	61.5	
ADJ205	694	RIBEYE 104
ADJ 365	1082	ADJ %IMF 56
GAIN	2.43	RIB FAT 114
FRAME	5.5	RUMP FAT 113
PROJ SC	38	CB INDEX 222

RED TR IMPALA 167D

RED SIX MILE SAKIC 832S

RED REBEL CREEK FLASH BANG 12F

RED REBEL CREEK SMS FL 516C

RED REBEL CREEK ASPEN 415B

RED TG LASSIE 135Y

	CE	BW	WW	YW	RADZ	DMI	SCR	DOC	CLAW	ANGLE	CW	MARB	REA	FAT	HPG	MCE	MILK	MW	MH
EPD	0	2.3	40	64	0.16	0.13	1.09	12	0.41	0.41	25	0.11	0.36	0.007	11	5	32	18	0.2
ACC	27	50	43	33	23	23	33	21	19	19	33	28	29	24	12	21	25	30	30
RANK	68	71	50	60	81	29	*14	56	35	*6	45	75	56	70	35	51	*2	83	54



22K

RED REBEL CREEK *Knockout* 22K 2256647 01-03-2022 ROOK 22K

ULTRASOUND DATA		RATIO
BW	90	
LMY	61.8	
ADJ205	614	RIBEYE 112
ADJ 365	1079	ADJ %IMF 93
GAIN	2.91	RIB FAT 122
FRAME	4.8	RUMP FAT 95
PROJ SC	37.5	CB INDEX 218

SPUR FRANCHISE OF GARTON

RED TR IMPALA 167D

RED 9 MILE FRANCHISE 630S

RED REBEL CREEK IMP SAK 850F

RED C-BAR ABIGRACE Y11

RED REBEL CREEK SMS FL 518C

	CE	BW	WW	YW	RADZ	DMI	SCR	DOC	CLAW	ANGLE	CW	MARB	REA	FAT	HPG	MCE	MILK	MW	MH
EPD	-1	2.5	43	74	0.16	0.65	1.4	14	0.34	0.41	28	0.52	0.37	0.03	9	0	32	33	0
ACC	31	51	44	34	25	25	34	24	21	22	34	29	30	25	15	26	27	31	32
RANK	75	75	38	36	81	84	*5	42	*8	*6	34	*5	54	97	75	91	*2	63	78

REBEL CREEK 2023 RED ANGUS BULL SALE



23K

RED REBEL CREEK

Kia

23K

2256657

02-03-2022

ROOK 23K

		ULTRASOUND DATA	RATIO
BW	92	LMY	63.4
ADJ205	662	RIBEYE	99
ADJ 365	1158	ADJ %IMF	107
GAIN	3.1	RIB FAT	79
FRAME	4.6	RUMP FAT	95
PROJ SC	37	CB INDEX	257

RED TR ROLLS ROYCE 44B

RED TR IMPALA 167D

RED TR MS PATHY 720X

RED BROWN JY REDEMPTION Y1334

RED REBEL CREEK RE FL 821F

RED TG DORY JIBA 52W

	CE	BW	WW	YW	RADZ	DMI	SCR	DOC	CLAW	ANGLE	CW	MARB	REA	FAT	HPG	MCE	MILK	MW	MH
EPD	4	2	55	110	0.26	1.43	1.48	18	0.38	0.45	47	0.54	0.6	-0.03	12	6	18	89	0.8
ACC	28	49	42	33	23	23	33	21	22	22	33	28	29	24	11	24	27	31	30
RANK	38	66	*7	*1	*2	99	*3	16	21	18	*2	*4	*10	*1	*11	39	95	*3	*4



24K

RED REBEL CREEK

Kraven

24K

2256658

02-03-2022

ROOK 24K

		ULTRASOUND DATA	RATIO
BW	85	LMY	63
ADJ205	663	RIBEYE	118
ADJ 365	1193	ADJ %IMF	88
GAIN	3.31	RIB FAT	117
FRAME	5.8	RUMP FAT	121
PROJ SC	39.5	CB INDEX	256

SPUR FRANCHISE OF GARTON

RED 9 MILE FRANCHISE 6305

RED C-BAR ABIGRACE Y11

RED LWNBRG HARVESTOR 132E

RED REBEL CREEK HAR ESC 20'27H

RED BAD LANDS REGAL 537C

	CE	BW	WW	YW	RADZ	DMI	SCR	DOC	CLAW	ANGLE	CW	MARB	REA	FAT	HPG	MCE	MILK	MW	MH
EPD	0	1.5	51	91	0.18	0.94	1.74	20	0.34	0.4	34	0.19	0.6	0.03	11	3	35	30	0.2
ACC	34	51	44	34	25	25	33	24	19	18	34	29	30	25	14	25	25	29	32
RANK	68	56	*14	*9	59	95	*1	*9	*8	*4	*14	58	*10	83	29	72	*1	68	54

REBEL CREEK 2023 RED ANGUS BULL SALE



26K

RED REBEL CREEK

Kicker

26K 2256825

BW	66
ADJ205	665
ADJ 365	1120
GAIN	2.84
FRAME	5.3
PROJ SC	37

ULTRASOUND DATA		RATIO
LMY	63.1	
RIBEYE	13.08	108
ADJ %IMF	5.46	125
RIB FAT	0.24	95
RUMP FAT	0.29	106
CB INDEX	252	

02-03-2022

ROOK 26K

RED PELTON WIDELOAD 78B

RED BROWN JY REDEMPTION Y1334

RED RAML PAYLOAD 9500

RED REBEL CREEK RE RAS 812F

RED RAML CHEROKEE MAIDEN 500

RED REBEL CREEK RAS FL 642D

	CE	BW	WW	YW	RADZ	DMI	SCR	DOC	CLAW	ANGLE	CW	MARB	REA	FAT	HPG	MCE	MILK	MW	MH
EPD	13	-3.5	39	70	0.22	0.19	0.73	21	0.52	0.52	21	0.3	0.39	0.004	11	12	20	23	0
ACC	29	49	42	30	23	23	29	21	18	18	32	26	27	22	11	19	22	29	30
RANK	2	2	54	45	16	35	44	6	91	63	61	29	48	64	32	2	86	77	78



27K

RED REBEL CREEK

Kaiser

27K 2256659

BW	97
ADJ205	712
ADJ 365	1135
GAIN	2.64
FRAME	5.3
PROJ SC	36

ULTRASOUND DATA		RATIO
LMY	59.7	
RIBEYE	12.08	99
ADJ %IMF	3.59	82
RIB FAT	0.34	134
RUMP FAT	0.17	62
CB INDEX	258	

02-03-2022

ROOK 27K

SPUR FRANCHISE OF GARTON

RED REBEL CREEK BOARDWALK 16B

RED 9 MILE FRANCHISE 6305

RED REBEL CREEK BW PP 801F

RED C-BAR ABIGRACE Y11

RED REBEL CREEK SNOWWHITE 426B

	CE	BW	WW	YW	RADZ	DMI	SCR	DOC	CLAW	ANGLE	CW	MARB	REA	FAT	HPG	MCE	MILK	MW	MH
EPD	3	0.5	49	91	0.22	0.71	0.64	9	0.51	0.46	38	0.3	0.42	0.018	15	3	43	35	0.2
ACC	30	50	43	34	24	24	32	23	19	19	33	28	29	24	13	25	26	29	32
RANK	46	37	19	9	16	87	54	74	89	23	8	29	40	89	1	72	1	60	54

REBEL CREEK 2023 RED ANGUS BULL SALE



29K

RED REBEL CREEK

Kisser

29K 2256769

03-03-2022

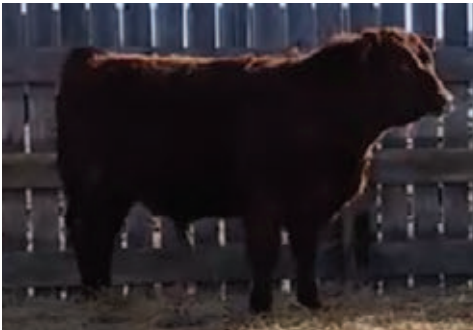
ROOK 29K

ULTRASOUND DATA		RATIO
BW	95	
ADJ205	649	
ADJ365	1110	
GAIN	2.89	
FRAME	5.6	
PROJ SC	38	
LMY	63	
RIBEYE	12.59	104
ADJ %IMF	3.53	81
RIB FAT	0.23	91
RUMP FAT	0.22	80
CB INDEX	256	

RED PELTON WIDELOAD 78B
RED RAML PAYLOAD 9500
RED RAML CHEROKEE MAIDEN 500

RED TR IMPALA 167D
RED REBEL CREEK IMP BS 917G
RED REBEL CREEK DAISY 405B

	CE	BW	WW	YW	RADZ	DMI	SCR	DOC	CLAW	ANGLE	CW	MARB	REA	FAT	HPG	MCE	MILK	MW	MH
EPD	-2	1.4	50	85	0.23	0.1	1.05	13	0.44	0.51	38	0.27	0.56	-0.05	11	1	28	49	0.1
ACC	27	48	41	28	21	21	27	20	15	15	31	24	25	21	9	18	20	26	28
RANK	80	54	16	16	*10	26	16	49	52	57	8	36	*14	*3	27	87	*11	36	69



31K

RED REBEL CREEK

Kernel

31K 2263061

03-03-2022

ROOK 31K

ULTRASOUND DATA		RATIO
BW	81	
ADJ205	639	
ADJ365	1116	
GAIN	2.98	
FRAME	5.8	
PROJ SC	36	
LMY	62	
RIBEYE	11.98	102
ADJ %IMF	4.63	101
RIB FAT	0.25	109
RUMP FAT	0.19	79
CB INDEX	265	

SPUR FRANCHISE OF GARTON
RED 9 MILE FRANCHISE 6305
RED C-BAR ABIGRACE Y11

RED DKF RAZOR 55C
RED REBEL CREEK RAZ BS 20'35H
RED TG CASSIE 29Z

	CE	BW	WW	YW	RADZ	DMI	SCR	DOC	CLAW	ANGLE	CW	MARB	REA	FAT	HPG	MCE	MILK	MW	MH
EPD	6	-0.4	48	96	0.27	0.44	0.72	4	0.52	0.53	28	0.3	0.44	-0.01	11	9	30	42	0.5
ACC	34	51	44	34	25	25	33	23	19	19	34	28	29	25	15	26	26	29	31
RANK	24	23	21	*6	*1	64	45	93	91	69	34	29	34	27	30	*12	*4	47	16

REBEL CREEK 2023 RED ANGUS BULL SALE



34K

RED REBEL CREEK *Kobe* 34K 2256774 05-03-2022 ROOK 34K

ULTRASOUND DATA		RATIO
BW	109	
ADJ205	649	
ADJ365	1209	
GAIN	3.5	
FRAME	6.6	
PROJ SC	36	
LMY	63.3	
RIBEYE	12.33	101
ADJ %IMF	3.59	82
RIB FAT	0.21	83
RUMP FAT	0.29	106
CB INDEX	221	

RED PELTON WIDELOAD 78B

RED LAZY MC FORESIGHT 185B

RED RAML PAYLOAD 9500

RED REBEL CREEK FS FL 972G

RED RAML CHEROKEE MAIDEN 500

RED TG DORY JIBA 52W

	CE	BW	WW	YW	PADZ	DMI	SCR	DOC	CLAW	ANGLE	CW	MARB	REA	FAT	HPG	MCE	MILK	MW	MH
EPD	-5	3.3	51	84	0.22	0.02	0.67	9	0.54	0.55	46	0.27	0.8	-0.028	9	8	23	65	0.5
ACC	27	48	41	29	21	21	27	20	14	14	31	24	25	21	9	18	20	26	28
RANK	92	86	14*	18	16	19	51	74	95	81	2*	36	2*	5*	73	19	58	14	16



36K

RED REBEL CREEK *Kluster* 36K 2256775 05-03-2022 ROOK 36K

ULTRASOUND DATA		RATIO
BW	87	
ADJ205	672	
ADJ365	1202	
GAIN	3.31	
FRAME	6.4	
PROJ SC	38	
LMY	62.4	
RIBEYE	12.83	106
ADJ %IMF	4.32	99
RIB FAT	0.26	103
RUMP FAT	0.19	69
CB INDEX	220	

RED PELTON WIDELOAD 78B

RED SIX MILE GRAND SLAM 130Z

RED RAML PAYLOAD 9500

RED REBEL CREEK GS SM 718E

RED RAML CHEROKEE MAIDEN 500

RED TG BOBBIE 218S

	CE	BW	WW	YW	PADZ	DMI	SCR	DOC	CLAW	ANGLE	CW	MARB	REA	FAT	HPG	MCE	MILK	MW	MH
EPD	3	1.4	53	87	0.23	0.23	1.1	8	0.48	0.59	41	0.28	0.58	-0.003	11	4	32	76	0.5
ACC	26	47	40	28	20	20	25	18	14	14	29	22	23	19	8	16	19	26	29
RANK	46	54	10*	14*	10	44	14*	80	75	95	5*	33	11*	45	23	62	2*	7*	16

REBEL CREEK 2023 RED ANGUS BULL SALE



ULTRASOUND DATA		RATIO
BW	94	
ADJ205	782	RIBEYE
		13.16
ADJ 365	1238	ADJ %IMF
		7.59
GAIN	2.85	RIB FAT
		0.26
FRAME	6.1	RUMP FAT
		0.23
PROJ SC	38.5	CB INDEX
		307

37K

RED REBEL CREEK *Kickstart* 37K 2256777 07-03-2022 ROOK 37K

RED PELTON WIDELOAD 78B
RED RAML PAYLOAD 9500
RED RAML CHEROKEE MAIDEN 500

RED BIEBER DEEP END 8597 DDF
RED REBEL CREEK DEEP RE 909G
RED REBEL CREEK RE MAX 711E

	CE	BW	WW	YW	RADZ	DMI	SCR	DOC	CLAW	ANGLE	CW	MARB	REA	FAT	HPG	MCE	MILK	MW	MH
EPD	6	1.3	60	108	0.25	0.86	0.91	14	0.37	0.42	54	0.69	0.74	-0.09	10	9	31	55	0.3
ACC	28	49	41	29	22	22	27	20	15	15	31	25	26	21	10	18	20	27	29
RANK	24	52	*3	*2	*3	93	26	42	16	*9	*1	*1	*2	*12	52	*12	*3	26	40



ULTRASOUND DATA		RATIO
BW	105	
ADJ205	727	RIBEYE
		11.61
ADJ 365	1175	ADJ %IMF
		6.17
GAIN	2.8	RIB FAT
		0.23
FRAME	6.4	RUMP FAT
		0.27
PROJ SC	40.5	CB INDEX
		208

39K

RED REBEL CREEK *Kollider* 39K 2256778 10-03-2022 ROOK 39K

RED PELTON WIDELOAD 78B
RED RAML PAYLOAD 9500
RED RAML CHEROKEE MAIDEN 500

RED BROWN JYJ REDEMPTION Y1334
RED REBEL CREEK RD BS 514C
RED TOP GRADE LASS 16A

	CE	BW	WW	YW	RADZ	DMI	SCR	DOC	CLAW	ANGLE	CW	MARB	REA	FAT	HPG	MCE	MILK	MW	MH
EPD	1	1.4	45	75	0.18	0.33	1.68	13	0.5	0.54	34	0.57	0.37	0.002	8	0	30	38	0.1
ACC	29	49	42	30	22	22	28	20	16	17	32	25	26	22	10	19	22	29	29
RANK	61	54	30	34	59	50	*1	49	84	75	*14	*3	54	58	78	91	*4	55	69

REBEL CREEK 2023 RED ANGUS BULL SALE



		ULTRASOUND DATA	RATIO
BW	85	LMY	62.2
ADJ205	642	RIBEYE	105
ADJ 365	1109	ADJ %IMF	111
GAIN	2.91	RIB FAT	100
FRAME	3.7	RUMP FAT	75
PROJ SC	34	CB INDEX	233

40K

RED REBEL CREEK *Crayon* 40K 2257529 12-03-2022 AR 40K

SPUR FRANCHISE OF GARTON
RED 9 MILE FRANCHISE 6305
RED C-BAR ABIGRACE Y11

RED DKF RAZOR 55C
RED REBEL CREEK RAZ BS 20'14H
RED TOP GRADE LASS 16A

	CE	BW	WW	YW	RADZ	DMI	SCR	DOC	CLAW	ANGLE	CW	MARB	REA	FAT	HPG	MCE	MILK	MW	MH
EPD	3	0.3	43	74	0.18	0.38	0.29	18	0.47	0.48	25	0.06	0.57	-0.007	10	5	39	14	-0.2
ACC	34	50	43	34	24	24	33	23	19	19	33	28	29	24	14	25	25	29	31
RANK	46	33	38	36	59	56	86	16	69	33	45	84	12	34	56	51	1	87	91



		ULTRASOUND DATA	RATIO
BW	82	LMY	60.6
ADJ205	698	RIBEYE	102
ADJ 365	1132	ADJ %IMF	116
GAIN	2.71	RIB FAT	126
FRAME	4.2	RUMP FAT	124
PROJ SC	36.5	CB INDEX	213

41K

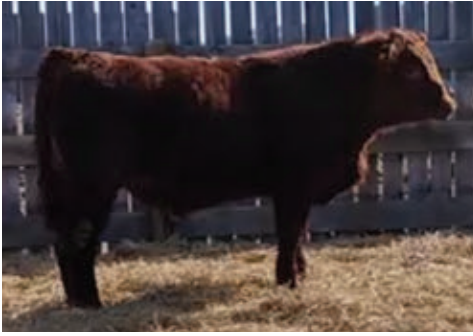
RED REBEL CREEK *Klaus* 41K 2263082 13-03-2022 ROOK 41K

RED LIKE IT PROFIT BUILDER 7215E
RED BENCHMARK FOR PROFIT 51'19
RED BENCHMARK FIREFLY 77'15

RED SIX MILE SAKIC 832S
RED REBEL CREEK SA WT 510C
RED TG LARKY 138Z

	CE	BW	WW	YW	RADZ	DMI	SCR	DOC	CLAW	ANGLE	CW	MARB	REA	FAT	HPG	MCE	MILK	MW	MH
EPD	3	-0.6	46	78	0.19	0.37	0.13	13	0.35	0.43	25	0.51	-0.14	0.027	8	7	28	67	0.6
ACC	28	51	43	32	26	26	34	23	21	21	34	29	29	25	14	22	26	31	32
RANK	46	20	27	28	46	55	93	49	10	12	45	5	99	95	78	28	11	12	10

REBEL CREEK 2023 RED ANGUS BULL SALE



ULTRASOUND DATA		RATIO
BW	96	
ADJ205	674	
ADJ 365	1166	
GAIN	3.07	
FRAME	4.7	
PROJ SC	39.5	
		LMY 61.7
		RIBEYE 98
		ADJ %IMF 87
		RIB FAT 103
		RUMP FAT 102
		CB INDEX 190

43K

RED REBEL CREEK *Kustom* 43K 2263084 15-03-2022 ROOK 43K

RED TR IMPALA 167D
 RED REBEL CREEK FLASH BANG 12F
 RED REBEL CREEK ASPEN 415B

RED TER-RON RASCAL 104Z
 RED REBEL CREEK RAS FL 750E
 RED TG LARKY 77W

	CE	BW	WW	YW	RADZ	DMI	SCR	DOC	CLAW	ANGLE	CW	MARB	REA	FAT	HPG	MCE	MILK	MW	MH
EPD	-5	2.7	42	79	0.21	0.54	1.07	19	0.57	0.61	24	0.06	0.53	-0.03	9	1	28	47	0.5
ACC	26	50	42	33	23	23	32	22	19	19	33	28	29	24	12	21	24	30	31
RANK	92	78	42	26	23	74	15*	12*	99	97	49	84	17	20	67	87	11*	38	16

CATTLE HEALTH MANAGEMENT



HEALTH AND NUTRITION SOLUTIONS FOR COW CALF AND FEEDLOT CLIENTS

At every stage of production we provide a holistic approach to animal care that combines overall health, nutrition, data management, animal welfare, food safety, and sustainability.

At Cattle Health Management, we are more than veterinarians, nutritionists, and professionals— we are invested partners in the success of your business.

BROOKS
403-362-5114

COALDALE
403-328-4454

TABER
403-223-2000

WWW.CATTLEHEALTH.CO

REBEL CREEK 2023 RED ANGUS BULL SALE



		ULTRASOUND DATA	RATIO
BW	83	LMY	61.4
ADJ205	629	RIBEYE	100
ADJ 365	1050	ADJ %IMF	100
GAIN	2.63	RIB FAT	100
FRAME	4.8	RUMP FAT	100
PROJ SC	42.5	CB INDEX	203

46K

RED REBEL CREEK *Klobber* 46K 2263072 16-03-2022 ROOK 46K

RED LIKE IT PROFIT BUILDER 7215E **RED COUNT RIDGE GRAND PLAN 29Z**
RED BENCHMARK FOR PROFIT 51'19 **RED REBEL CREEK ANGELA 433B**
RED BENCHMARK FIREFLY 77'15 **RED TG RENA 67X**

	CE	BW	WW	YW	RADZ	DMI	SCR	DOC	CLAW	ANGLE	CW	MARB	REA	FAT	HPG	MCE	MILK	MW	MH
EPD	6	-0.1	33	42	0.11	-0.54	0.4	15	0.4	0.48	3	0.29	0.38	-0.029	6	7	26	0	-0.4
ACC	25	44	37	30	24	24	31	21	19	20	31	26	27	23	10	20	24	29	30
RANK	24	27	75	94	99	1	78	34	30	33	97	31	51	4	98	28	24	95	98



		ULTRASOUND DATA	RATIO
BW	85	LMY	64
ADJ205	646	RIBEYE	103
ADJ 365	1073	ADJ %IMF	69
GAIN	2.67	RIB FAT	75
FRAME	5.5	RUMP FAT	87
PROJ SC	37	CB INDEX	152

47K

RED REBEL CREEK *Kadet* 47K 2263070 17-03-2022 ROOK 47K

RED TR IMPALA 167D **RED TER-RON RASCAL 104Z**
RED REBEL CREEK FLASH BANG 12F **RED REBEL CREEK RAS FL 642D**
RED REBEL CREEK ASPEN 415B **RED TG LARK 153X**

	CE	BW	WW	YW	RADZ	DMI	SCR	DOC	CLAW	ANGLE	CW	MARB	REA	FAT	HPG	MCE	MILK	MW	MH
EPD	4	-0.3	36	70	0.18	0.81	1.16	2	0.62	0.53	16	0.36	0.52	0.005	8	12	28	47	0.4
ACC	27	50	43	33	24	24	33	22	20	20	33	28	29	25	12	22	25	31	31
RANK	38	24	65	45	59	12	96	99	69	78	18	18	66	84	2	11	38	26	

REBEL CREEK 2023 RED ANGUS BULL SALE



ULTRASOUND DATA		RATIO
BW 95	LMY 62	
ADJ205 623	RIBEYE 11.62	96
ADJ 365 1057	ADJ %IMF 3.56	82
GAIN 2.71	RIB FAT 0.24	95
FRAME 5.5	RUMP FAT 0.23	84
PROJ SC 38.5	CB INDEX 204	

49K

RED REBEL CREEK *Kit* 49K 2263094 19-03-2022 ROOK 49K

RED TR IMPALA 167D

RED LAZY MC FORESIGHT 185B

RED REBEL CREEK FLASH BANG 12F

RED REBEL CREEK FS RE 744E

RED REBEL CREEK ASPEN 415B

RED REBEL CREEK VIOLA 406B

	CE	BW	WW	YW	RADZ	DMI	SCR	DOC	CLAW	ANGLE	CW	MARB	REA	FAT	HPG	MCE	MILK	MW	MH
EPD	-3	3.1	41	71	0.19	0.11	0.09	10	0.56	0.56	26	0.48	0.22	0.001	11	3	22	43	0.1
ACC	27	50	43	33	24	24	33	22	20	20	33	28	29	24	13	22	25	31	31
RANK	85	84	46	43	46	27	94	69	98	86	41	7*	88	55	35	72	69	45	69



ULTRASOUND DATA		RATIO
BW 79	LMY 62.1	
ADJ205 690	RIBEYE 10.81	92
ADJ 365 1049	ADJ %IMF 5.2	114
GAIN 2.24	RIB FAT 0.21	91
FRAME 4.8	RUMP FAT 0.3	125
PROJ SC 38.5	CB INDEX 213	

51K

RED REBEL CREEK *Kronos* 51K 2263097 20-03-2022 ROOK 51K

CALVO JULIAN 24B

RED REBEL CREEK FLASH BANG 12F

RED GEMSTONE 24B LAD 256F

RED REBEL CREEK FB GS 20'50H

RED GEMSTONE 30X LASS 56C

RED REBEL CREEK GS WT 733E

	CE	BW	WW	YW	RADZ	DMI	SCR	DOC	CLAW	ANGLE	CW	MARB	REA	FAT	HPG	MCE	MILK	MW	MH
EPD	-3	2.8	68	112	0.23	0.92	1.24	15	0.52	0.53	49	0.25	0.3	0.006	8	3	20	90	0.7
ACC	31	49	41	30	23	23	29	22	15	15	33	27	28	23	11	20	22	28	30
RANK	85	80	1*	1*	10*	95	9	34	91	69	2*	41	72	68	82	72	86	3*	6*

YEARLING BULLS

REBEL CREEK 2023 RED ANGUS BULL SALE



52K

RED REBEL CREEK

Kudo

52K 2263099

21-03-2022

ROOK 52K

ULTRASOUND DATA		RATIO
BW 95	LMY 59.3	
ADJ205 734	RIBEYE	95
ADJ 365 1201	ADJ %IMF	75
GAIN 2.91	RIB FAT	134
FRAME 6.1	RUMP FAT	157
PROJ SC 40.5	CB INDEX 216	

RED LIKE IT PROFIT BUILDER 7215E
RED BENCHMARK FOR PROFIT 51'19
RED BENCHMARK FIREFLY 77'15

RED BROWN JY REDEMPTION Y1334
RED REBEL CREEK RE RAS 709E
RED REBEL CREEK RAS PK 542C

	CE	BW	WW	YW	RADZ	DMI	SCR	DOC	CLAW	ANGLE	CW	MARB	REA	FAT	HPG	MCE	MILK	MW	MH
EPD	2	1.4	50	87	0.2	0.63	0.91	22	0.45	0.49	23	0.51	0.15	0.015	7	6	29	62	0.5
ACC	27	49	42	31	24	24	31	21	19	20	33	27	28	23	11	20	23	30	30
RANK	53	54	16	14*	33	82	26	5*	58	42	54	5*	95	86	93	39	7*	17	16



54K

RED REBEL CREEK

Karma

54K 2263064

24-03-2022

ROOK 54K

ULTRASOUND DATA		RATIO
BW 88	LMY 59	
ADJ205 664	RIBEYE	89
ADJ 365 1076	ADJ %IMF	132
GAIN 2.58	RIB FAT	130
FRAME 6.1	RUMP FAT	175
PROJ SC 36.5	CB INDEX 201	

RED LIKE IT PROFIT BUILDER 7215E
RED BENCHMARK FOR PROFIT 51'19
RED BENCHMARK FIREFLY 77'15

RED U-2 WILD THING 346X
RED TOP GRADE BOBBIE 6A
RED TG BOBBIE 178T

	CE	BW	WW	YW	RADZ	DMI	SCR	DOC	CLAW	ANGLE	CW	MARB	REA	FAT	HPG	MCE	MILK	MW	MH
EPD	-1	1	50	77	0.17	0.56	0.91	21	0.45	0.44	10	0.41	0.11	0.001	5	7	20	41	0.4
ACC	27	50	43	31	25	25	32	22	20	20	33	27	28	23	11	21	25	30	31
RANK	75	46	16	30	70	76	26	6*	58	15*	89	13*	97	55	99	28	86	50	26

REBEL CREEK 2023 RED ANGUS BULL SALE



		ULTRASOUND DATA	RATIO
BW	77	LMY	62.3
ADJ205	652	RIBEYE	86
ADJ 365	1059	ADJ %IMF	109
GAIN	2.54	RIB FAT	75
FRAME	5.6	RUMP FAT	91
PROJ SC	37.5	CB INDEX	202

55K

RED REBEL CREEK *Kryptonite* 55K 2263074 25-03-2022 ROOK 55K

RED TR IMPALA 167D
RED REBEL CREEK FLASH BANG 12F
RED REBEL CREEK ASPEN 415B

TER-RON PARK PLACE 18Y
RED REBEL CREEK PP RE 609D
RED REBEL CREEK PENELOPE 414B

	CE	BW	WW	YW	RADZ	DMI	SCR	DOC	CLAW	ANGLE	CW	MARB	REA	FAT	HPG	MCE	MILK	MW	MH
EPD	1	-0.2	47	87	0.24	0.63	0.95	14	0.68	0.56	39	0.43	0.32	-0.004	9	6	26	64	0.7
ACC	25	47	40	30	21	21	29	18	16	17	30	25	26	21	8	18	22	27	27
RANK	61	25	24	14*	6*	82	23	42	99	86	7*	11*	67	3*	71	39	24	15*	6*



		ULTRASOUND DATA	RATIO
BW	85	LMY	61.2
ADJ205	700	RIBEYE	100
ADJ 365	1123	ADJ %IMF	100
GAIN	2.64	RIB FAT	100
FRAME	5.4	RUMP FAT	100
PROJ SC	36	CB INDEX	214

57K

RED REBEL CREEK *Kipper* 57K 2263075 26-03-2022 ROOK 57K

CALVO JULIAN 24B
RED GEMSTONE 24B LAD 256F
RED GEMSTONE 30X LASS 56C

RED EGL FURY 8100 DDF
RED REBEL CREEK FURY DE 20'04H
RED REBEL CREEK DE BS 719E

	CE	BW	WW	YW	RADZ	DMI	SCR	DOC	CLAW	ANGLE	CW	MARB	REA	FAT	HPG	MCE	MILK	MW	MH
EPD	0	1.9	62	92	0.17	0.68	0.75	14	0.51	0.53	28	0.44	0.37	-0.006	9	9	14	49	0.4
ACC	28	48	40	30	23	23	28	22	15	15	32	27	28	23	10	18	21	27	30
RANK	68	64	2*	8*	70	86	42	42	89	69	34	10*	54	37	73	12*	99	36	26

REBEL CREEK 2023 RED ANGUS BULL SALE



58K

RED REBEL CREEK

Kylington

58K 2263076

26-03-2022

ROOK 58K

		ULTRASOUND DATA	RATIO
BW	87	LMY	61.6
ADJ205	636	RIBEYE	112
ADJ 365	1132	ADJ %IMF	85
GAIN	3.1	RIB FAT	120
FRAME	6.1	RUMP FAT	112
PROJ SC	38	CB INDEX	194

RED TR IMPALA 167D

RED TROTTERS STRONGHOLD 156

RED REBEL CREEK FLASH BANG 12F

RED REBEL CREEK SH WN 515C

RED REBEL CREEK ASPEN 415B

RED TOP GRADE ZELDA 13Z

	CE	BW	WW	YW	RADZ	DMI	SCR	DOC	CLAW	ANGLE	CW	MARB	REA	FAT	HPG	MCE	MILK	MW	MH
EPD	0	1.9	47	77	0.2	0.29	0.63	5	0.53	0.6	30	0.08	0.33	-0.08	11	9	19	47	0.7
ACC	26	49	42	33	23	23	33	21	18	19	32	27	28	24	11	21	24	30	30
RANK	68	64	24	30	33	45	55	91	93	96	26	80	65	32	35	12*	92	38	6*



59K

RED REBEL CREEK

Kuhl

59K 2263077

26-03-2022

ROOK 59K

		ULTRASOUND DATA	RATIO
BW	82	LMY	61.6
ADJ205	645	RIBEYE	95
ADJ 365	1136	ADJ %IMF	103
GAIN	3.07	RIB FAT	99
FRAME	4.6	RUMP FAT	117
PROJ SC	39	CB INDEX	215

RED LIKE IT PROFIT BUILDER 7215E

RED U-2 WILD THING 346X

RED BENCHMARK FOR PROFIT 51'19

RED TG OLIVIA 18Z

RED BENCHMARK FIREFLY 77'15

RED TG OLIVIA 19W

	CE	BW	WW	YW	RADZ	DMI	SCR	DOC	CLAW	ANGLE	CW	MARB	REA	FAT	HPG	MCE	MILK	MW	MH
EPD	0	-0.7	45	72	0.19	0.2	0.49	14	0.28	0.37	33	0.36	0.13	-0.03	3	4	26	41	0
ACC	28	51	43	33	26	26	34	23	19	19	34	28	29	25	12	22	26	31	32
RANK	68	19	30	41	46	36	70	42	2*	1*	17	18	96	20	99	62	24	50	78

REBEL CREEK 2023 RED ANGUS BULL SALE



BW 96	ULTRASOUND DATA LMY 62	RATIO
ADJ205 638	RIBEYE 11.05	91
ADJ 365 1088	ADJ %IMF 4.92	113
GAIN 2.81	RIB FAT 0.22	87
FRAME 5.7	RUMP FAT 0.22	80
PROJ SC 34	CB INDEX 232	

60K

RED REBEL CREEK *Kiloton* 60K 2263078 27-03-2022 ROOK 60K

RED TR IMPALA 167D

RED COUNT RIDGE GRAND PLAN 29Z

RED REBEL CREEK FLASH BANG 12F

RED REBEL CREEK GP WT 536C

RED REBEL CREEK ASPEN 415B

RED TG LASS 16Z

	CE	BW	WW	YW	RADZ	DMI	SCR	DOC	CLAW	ANGLE	CW	MARB	REA	FAT	HPG	MCE	MILK	MW	MH
EPD	0	2.7	54	99	0.26	0.87	0.97	6	0.49	0.48	44	0.43	0.3	-0.08	9	5	20	67	0.4
ACC	28	51	44	34	25	25	34	24	21	21	35	29	30	26	12	23	26	32	33
RANK	68	78	9	4	2	93	22	87	80	33	3	11	72	2	60	51	86	12	26



BW 94	ULTRASOUND DATA LMY 64.1	RATIO
ADJ205 646	RIBEYE 12.98	107
ADJ 365 1142	ADJ %IMF 4.17	96
GAIN 3.1	RIB FAT 0.2	79
FRAME 5.7	RUMP FAT 0.21	77
PROJ SC 36.5	CB INDEX 274	

61K

RED REBEL CREEK *Kingsman* 61K 2263054 28-03-2022 ROOK 61K

RED LWNBRG HARVESTOR 103C

RED BROWN JYJ REDEMPTION Y1334

RED LWNBRG HARVESTOR 132E

RED REBEL CREEK RD FL 503C

RED TED CATALYST 63Y

RED TOP GRADE CASSIE 1A

	CE	BW	WW	YW	RADZ	DMI	SCR	DOC	CLAW	ANGLE	CW	MARB	REA	FAT	HPG	MCE	MILK	MW	MH
EPD	2	1.9	51	93	0.24	0.25	0.1	6	0.41	0.48	36	0.59	0.59	-0.01	6	5	22	31	-0.1
ACC	27	49	41	31	22	22	30	20	17	17	32	27	28	23	10	21	24	28	29
RANK	53	64	14	8	6	41	94	87	35	33	10	3	10	25	95	51	69	66	85

REBEL CREEK 2023 RED ANGUS BULL SALE



62K

RED REBEL CREEK *Kale* 62K 2263056 01-04-2022 ROOK 62K

	ULTRASOUND DATA	RATIO
BW 95	LMY 63.1	
ADJ205 814	RIBEYE 15	123
ADJ 365 1287	ADJ %IMF 3.09	71
GAIN 2.96	RIB FAT 0.3	118
FRAME 5.5	RUMP FAT 0.24	87
PROJ SC 40	CB INDEX 325	

RED LWNBRG HARVESTOR 103C **RED BIEBER DEEP END B597**
RED LWNBRG HARVESTOR 132E **REBEL CREEK DEEP LOG 915G**
RED TED CATALYST 63Y **REBEL CREEK LOG GD 602D**

	CE	BW	WW	YW	RADZ	DMI	SCR	DOC	CLAW	ANGLE	CW	MARB	REA	FAT	HPG	MCE	MILK	MW	MH
EPD	4	2.4	75	125	0.25	0.85	1.18	17	0.35	0.4	58	0.6	0.88	-0.04	9	11	29	79	0.5
ACC	28	50	42	32	24	24	31	23	17	17	34	28	29	25	12	23	25	29	31
RANK	38	73	*1	*1	*3	93	*11	21	*10	*4	*1	*3	*1	41	62	*4	*7	*5	16



63K

RED REBEL CREEK *Krash* 63K 2263059 03-04-2022 ROOK 63K

	ULTRASOUND DATA	RATIO
BW 85	LMY 61	
ADJ205 649	RIBEYE 11.34	93
ADJ 365 1072	ADJ %IMF 4.93	113
GAIN 2.64	RIB FAT 0.27	107
FRAME 4.5	RUMP FAT 0.35	128
PROJ SC 37	CB INDEX 212	

RED LIKE IT PROFIT BUILDER 7215E **RED LAZY MC FORESIGHT 185B**
RED BENCHMARK FOR PROFIT 51'19 **RED REBEL CREEK FS PP 748E**
RED BENCHMARK FIREFLY 77'15 **RED TOP GRADE RUTH 106A**

	CE	BW	WW	YW	RADZ	DMI	SCR	DOC	CLAW	ANGLE	CW	MARB	REA	FAT	HPG	MCE	MILK	MW	MH
EPD	3	0.5	44	73	0.18	0.43	-0.04	22	0.45	0.44	11	0.39	0.08	0.03	6	5	24	30	0.1
ACC	28	51	43	32	26	26	34	23	21	21	34	29	29	25	12	22	24	31	32
RANK	46	37	34	39	59	63	97	*5	58	*15	88	*15	98	97	98	51	46	68	69

REBEL CREEK 2023 RED ANGUS BULL SALE



ULTRASOUND DATA		RATIO
BW	77	
ADJ205	665	RIBEYE
		11.09
ADJ 365	1167	ADJ %IMF
		5.06
GAIN	3.13	RIB FAT
		0.29
FRAME	6.3	RUMP FAT
		0.33
PROJ SC	37.5	CB INDEX
		199

(64K)

RED REBEL CREEK *Kirk* 64K 2263058 03-04-2022 ROOK 64K

RED LIKE IT PROFIT BUILDER 7215E RED COUNT RIDGE GRAND PLAN 29Z
 RED BENCHMARK FOR PROFIT 51'19 RED REBEL CREEK SNOWWHITE 428B
 RED BENCHMARK FIREFLY 77'15 RED TG CASSIE 29N

	CE	BW	WW	YW	RADZ	DMI	SCR	DOC	CLAW	ANGLE	CW	MARB	REA	FAT	HPG	MCE	MILK	MW	MH
EPD	5	-0.3	45	80	0.23	0.42	0.78	15	0.49	0.53	31	0.51	0.13	0.001	4	3	34	58	0.4
ACC	26	49	37	31	24	24	32	21	18	19	31	26	27	23	10	20	24	29	29
RANK	31	24	30	24	10*	61	38	34	80	69	23	5*	96	55	99	72	1*	22	26



ULTRASOUND DATA		RATIO
BW	79	
ADJ205	648	RIBEYE
		12.22
ADJ 365	1064	ADJ %IMF
		3.79
GAIN	2.6	RIB FAT
		0.31
FRAME	4.5	RUMP FAT
		0.39
PROJ SC	39.5	CB INDEX
		199

(65K)

RED REBEL CREEK *Kajur* 65K 2263051 03-04-2022 ROOK 65K

RED LIKE IT PROFIT BUILDER 7215E RED LAZY MC FORESIGHT 185B
 RED BENCHMARK FOR PROFIT 51'19 RED REBEL CREEK FS BS 931G
 RED BENCHMARK FIREFLY 77'15 RED REBEL CREEK BAILEY 404B

	CE	BW	WW	YW	RADZ	DMI	SCR	DOC	CLAW	ANGLE	CW	MARB	REA	FAT	HPG	MCE	MILK	MW	MH
EPD	10	-1.4	44	76	0.22	0.01	1.23	11	0.44	0.48	20	0.26	0.33	0.017	3	7	25	64	0.4
ACC	29	51	44	32	27	27	34	24	20	20	35	29	30	26	13	23	25	31	33
RANK	7*	12*	34	32	16	19	9*	63	52	33	65	38	65	88	99	28	34	15*	26

REBEL CREEK 2023 RED ANGUS BULL SALE



66K

RED REBEL CREEK

Kollision

66K 2263062

08-04-2022

ROOK 66K

ULTRASOUND DATA		RATIO
BW	73	
ADJ205	684	
ADJ 365	1081	
GAIN	2.49	
FRAME	5.8	
PROJ SC	41	
LMY	61	
RIBEYE	10.42	86
ADJ %IMF	4.61	106
RIB FAT	0.24	95
RUMP FAT	0.27	98
CB INDEX	205	

RED LIKE IT PROFIT BUILDER 7215E
 RED BENCHMARK FOR PROFIT 51'19
 RED BENCHMARK FIREFLY 77'15

RED FEDES BIG SKY R9
 RED REBEL CREEK BS MS 507C
 RED TOP GRADE PEARL 264A

	CE	BW	WW	YW	RADZ	DMI	SCR	DOC	CLAW	ANGLE	CW	MARB	REA	FAT	HPG	MCE	MILK	MW	MH
EPD	12	-3.4	45	75	0.19	0.41	1.13	19	0.44	0.6	30	0.49	0.36	-0.02	4	10	34	40	0.4
ACC	27	49	41	30	24	24	31	20	18	18	32	26	27	22	10	20	23	29	29
RANK	3	3	30	34	46	60	13	12	52	96	26	6	56	48	99	7	1	51	26

Invested in animal nutrition.

Optimize the performance of your herd with a **beef nutritional program** you can trust all year-round.

We carry a complete line of beef feeds including:

- Custom Ration Balancing
- Grower/Finisher Supplements
- Bull Rations
- HI-RANGE Mineral Program
- Creep Feeds

.....and many more!

Owen Syverson, Territory Manager

Cell: 403.501.9102

Email: owen.syverson@trouwnutrition.com

www.trouwnutrition.ca



© 2022 Trouw Nutrition

REBEL CREEK 2023 RED ANGUS BULL SALE



ULTRASOUND DATA		RATIO
BW 69	LMY	
ADJ205 635	RIBEYE	
ADJ 365 974	ADJ %IMF	
GAIN 2.12	RIB FAT	
FRAME	RUMP FAT	
PROJ SC 38.5	CB INDEX 224	



RED REBEL CREEK *Iconic* 171J 2235400 10-10-2021 ROOK 171J

RED LWNBRG HARVESTOR 103C
RED LWNBRG HARVESTOR 132E
RED TED CATALYST 63Y

RED TR IMPALA 167D
RED REBEL CREEK IMP RE 843F
RED REBEL CREEK RD FL 503C

	CE	BW	WW	YW	RADZ	DMI	SCR	DOC	CLAW	ANGLE	CW	MARB	REA	FAT	HPG	MCE	MILK	MW	MH
EPD	0	1.5	40	76	0.24	0.34	0.39	6	0.47	0.54	38	0.58	0.29	0.005	8	5	22	43	0.3
ACC	26	46	35	29	21	21	30	20	16	17	30	26	27	23	10	20	22	26	28
RANK	68	56	50	32	*6	52	79	87	69	75	*8	*3	75	66	80	51	69	45	40



ULTRASOUND DATA		RATIO
BW 88	LMY	
ADJ205 633	RIBEYE	
ADJ 365 983	ADJ %IMF	
GAIN 2.18	RIB FAT	
FRAME	RUMP FAT	
PROJ SC 34	CB INDEX 204	



RED REBEL CREEK *Ice Age* 172J 2235401 21-10-2021 ROOK 172J

RED LWNBRG HARVESTOR 103C
RED LWNBRG HARVESTOR 132E
RED TED CATALYST 63Y

RED REBEL CREEK BOARDWALK 16B
RED REBEL CREEK BW BS 408E
RED TG FANCY 203X

	CE	BW	WW	YW	RADZ	DMI	SCR	DOC	CLAW	ANGLE	CW	MARB	REA	FAT	HPG	MCE	MILK	MW	MH
EPD	2	0.8	46	76	0.15	0.49	0.77	9	0.54	0.55	27	-0.01	0.34	0.014	14	5	29	20	0.1
ACC	26	47	36	30	21	21	30	21	17	17	30	27	27	23	10	21	24	28	29
RANK	53	43	27	32	88	68	40	74	95	81	38	92	63	84	*3	51	*7	81	69

TWO YEAR OLD BULLS

REBEL CREEK 2023 RED ANGUS BULL SALE



173J

RED REBEL CREEK *Integrity* 173J 2240924 04-10-2021 ROOK 173J

ULTRASOUND DATA		RATIO
BW 94	LMY	
ADJ205 690	RIBEYE	
ADJ 365 1104	ADJ %IMF	
GAIN 2.58	RIB FAT	
FRAME	RUMP FAT	
PROJ SC 36	CB INDEX 265	

RED LWNBRG HARVESTOR 103C
RED LWNBRG HARVESTOR 132E
RED TED CATALYST 63Y

RED REBEL CREEK BOARDWALK 16B
RED REBEL CREEK BW BS 730E
RED REBEL CREEK BAILEY 404B

	CE	BW	WW	YW	RADZ	DMI	SCR	DOC	CLAW	ANGLE	CW	MARB	REA	FAT	HPG	MCE	MILK	MW	MH
EPD	-2	3.4	46	81	0.23	-0.13	1.11	13	0.36	0.47	32	0.18	0.48	-0.027	9	7	23	42	0.1
ACC	24	45	34	28	19	19	28	18	15	15	28	24	25	21	8	19	21	26	26
RANK	80	87	27	23	*10	*10	*14	49	*13	28	20	60	26	*6	66	28	58	47	69



174J

RED REBEL CREEK *Islander* 174J 2235402 04-10-2021 ROOK 174J

ULTRASOUND DATA		RATIO
BW 94	LMY	
ADJ205 621	RIBEYE	
ADJ 365 993	ADJ %IMF	
GAIN 2.33	RIB FAT	
FRAME	RUMP FAT	
PROJ SC 35	CB INDEX 194	

RED LWNBRG HARVESTOR 103C
RED LWNBRG HARVESTOR 132E
RED TED CATALYST 63Y

RED LAZY MC FORESIGHT 185B
RED REBEL CREEK FS PP 612D
RED TOP GRADE DONNA 110A

	CE	BW	WW	YW	RADZ	DMI	SCR	DOC	CLAW	ANGLE	CW	MARB	REA	FAT	HPG	MCE	MILK	MW	MH
EPD	-8	5.1	56	87	0.18	0.45	0.89	4	0.45	0.57	32	0.36	0.45	-0.001	7	2	16	41	0.2
ACC	26	47	36	30	21	21	30	21	17	17	30	27	27	23	10	21	24	28	29
RANK	97	98	*6	*14	59	65	28	93	58	90	20	18	32	51	92	81	99	50	54

REBEL CREEK 2023 RED ANGUS BULL SALE



ULTRASOUND DATA		RATIO
BW 77	LMY 61.2	
ADJ205 638	RIBEYE 11.67	100
ADJ 365 1097	ADJ %IMF 6.02	163
GAIN 2.87	RIB FAT 0.27	106
FRAME	RUMP FAT 0.26	92
PROJ SC 39	CB INDEX 230	



RED REBEL CREEK *Jeopardy* 11J 2197848 01-03-2021 ROOK 11J

RED TR ROLLS ROYCE 44B
RED TR IMPALA 167D
RED TR MS PATHY 720X

RED BROWN JY REDEMPTION Y1334
RED REBEL CREEK RD FL 503C
RED TOP GRADE CASSIE 1A

	CE	BW	WW	YW	RADZ	DMI	SCR	DOC	CLAW	ANGLE	CW	MARB	REA	FAT	HPG	MCE	MILK	MW	MH
EPD	12	-1.1	30	61	0.22	-0.1	0.36	13	0.39	0.55	27	0.5	0.28	0.07	8	12	24	35	0.2
ACC	29	50	43	39	25	25	34	22	23	23	35	31	32	28	12	25	28	33	32
RANK	3*	15*	84	66	16	12*	81	49	25	81	38	6*	77	70	84	2*	46	60	54



ULTRASOUND DATA		RATIO
BW 80	LMY 62.1	
ADJ205 629	RIBEYE 10.35	93
ADJ 365 1035	ADJ %IMF 3.95	107
GAIN 2.54	RIB FAT 0.21	83
FRAME	RUMP FAT 0.28	99
PROJ SC 39	CB INDEX 135	



RED REBEL CREEK *Jungle* 52J 2210454 22-03-2021 ROOK 52J

RED TR IMPALA 167D
RED REBEL CREEK FLASH BANG 12F
RED REBEL CREEK ASPEN 415B

RED U-2 WILD THING 346X
RED TOP GRADE BOBBIE 6A
RED TG BOBBIE 178T

	CE	BW	WW	YW	RADZ	DMI	SCR	DOC	CLAW	ANGLE	CW	MARB	REA	FAT	HPG	MCE	MILK	MW	MH
EPD	3	-0.4	30	55	0.18	0.12	0.73	12	0.49	0.53	15	0.28	0.18	0.003	2	7	21	52	0.3
ACC	27	50	43	38	25	25	33	22	19	20	34	30	31	28	11	22	25	31	31
RANK	46	23	84	78	59	28	44	56	80	69	80	33	92	61		28	79	31	40

REBEL CREEK 2023 RED ANGUS BULL SALE



54J

RED REBEL CREEK *Five* 54J 2210493 22-03-2021 ROOK 54J

ULTRASOUND DATA		RATIO
BW	68	
ADJ205	640	
ADJ365	1058	
GAIN	2.61	
FRAME		
PROJ SC	37	
LMY	62.4	
RIBEYE	10.94	94
ADJ %IMF	3.01	82
RIB FAT	0.2	79
RUMP FAT	0.21	74
CB INDEX	189	

RED TR IMPALA 167D

RED REBEL CREEK FLASH BANG 12F
RED REBEL CREEK ASPEN 415B

RED BROWN JYJ REDEMPTION Y1334

RED REBEL CREEK RE RAS 812F
RED REBEL CREEK RAS FL 642D

	CE	BW	WW	YW	RADZ	DMI	SCR	DOC	CLAW	ANGLE	CW	MARB	REA	FAT	HPG	MCE	MILK	MW	MH
EPD	6	-1.9	38	66	0.23	-0.26	0.78	9	0.62	0.62	32	0.07	0.36	-0.09	9	10	16	49	0.3
ACC	27	49	42	37	24	24	32	20	19	19	33	29	31	27	11	20	23	31	30
RANK	24	8*	58	55	10*	6*	38	74	99	98	20	82	56	12*	71*	7*	99	36	40



60J

RED REBEL CREEK *Zerga* 60J 2214784 30-03-2021 ROOK 60J

ULTRASOUND DATA		RATIO
BW	96	
ADJ205	606	
ADJ365	1073	
GAIN	2.92	
FRAME		
PROJ SC	39	
LMY	61.9	
RIBEYE	11.5	97
ADJ %IMF	3.82	126
RIB FAT	0.24	112
RUMP FAT	0.2	101
CB INDEX	180	

RED TR IMPALA 167D

RED REBEL CREEK FLASH BANG 12F
RED REBEL CREEK ASPEN 415B

RED FEDDES BIG SKY R9

RED TG EMMY 20Z
RED TG EMMY 20X

	CE	BW	WW	YW	RADZ	DMI	SCR	DOC	CLAW	ANGLE	CW	MARB	REA	FAT	HPG	MCE	MILK	MW	MH
EPD	3	1	25	52	0.2	-0.17	0.56	9	0.62	0.59	19	0.32	0.46	-0.01	8	5	30	23	0.1
ACC	27	50	43	37	24	24	32	21	18	18	33	29	30	27	11	20	25	31	31
RANK	46	46	93	83	33	9*	63	74	99	95	68	25	30	25	86	51	4*	77	69

REBEL CREEK 2023 RED ANGUS BULL SALE



		ULTRASOUND DATA	RATIO
BW	99	LMY	63.8
ADJ205	799	RIBEYE	110
ADJ 365	1244	ADJ %IMF	99
GAIN	2.87	RIB FAT	98
FRAME		RUMP FAT	91
PROJ SC	41	CB INDEX	193

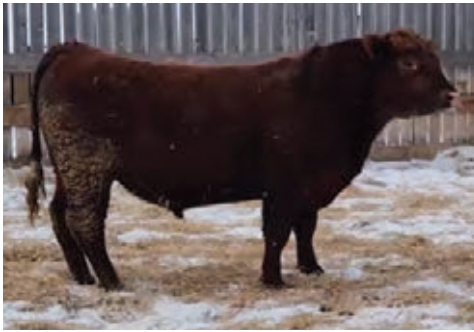
62J

RED REBEL CREEK *Jumayji* 62J 2210549 31-03-2021 ROOK 62J

RED TR IMPALA 167D
RED REBEL CREEK FLASH BANG 12F
RED REBEL CREEK ASPEN 415B

RED REBEL CREEK BOARDWALK 16B
RED REBEL CREEK BW PP 801F
RED REBEL CREEK SNOWWHITE 426B

	CE	BW	WW	YW	RADZ	DMI	SCR	DOC	CLAW	ANGLE	CW	MARB	REA	FAT	HPG	MCE	MILK	MW	MH
EPD	-4	2.6	60	101	0.21	0.91	0.94	-1	0.63	0.52	49	0.18	0.6	-0.09	14	3	29	82	0.9
ACC	25	48	41	36	23	23	31	20	16	17	32	28	30	26	10	20	23	29	30
RANK	89	77	3*	3*	23	95	24	98	99	63	2*	60*	10	29*	3	72*	7*	5*	2*



		ULTRASOUND DATA	RATIO
BW	84	LMY	9
ADJ205	640	RIBEYE	100
ADJ 365	1107	ADJ %IMF	100
GAIN	2.92	RIB FAT	100
FRAME		RUMP FAT	100
PROJ SC	41	CB INDEX	207

68J

RED REBEL CREEK *Juno* 68J 2210457 03-04-2021 ROOK 68J

RED TR IMPALA 167D
RED REBEL CREEK FLASH BANG 12F
RED REBEL CREEK ASPEN 415B

TER-RON PARK PLACE 18Y
RED TOP GRADE RUTH 106A
RED TG RUTH 106X

	CE	BW	WW	YW	RADZ	DMI	SCR	DOC	CLAW	ANGLE	CW	MARB	REA	FAT	HPG	MCE	MILK	MW	MH
EPD	2	1.6	52	86	0.2	0.58	1.01	24	0.52	0.51	47	0.07	0.34	0.05	9	7	22	63	0.7
ACC	23	42	36	30	20	20	30	19	15	17	28	25	26	22	9	19	22	27	27
RANK	53	58	12*	15	33	78	19	2*	91	57	2*	82	63	94	67	28	69	16	6*

TWO YEAR OLD BULLS

35

REBEL CREEK 2023 RED ANGUS BULL SALE



70J

RED REBEL CREEK

Jelly

70J 2210508

08-04-2021

ROOK 70J

ULTRASOUND DATA		RATIO
BW	95	
ADJ205	667	RIBEYE
		100
ADJ 365	1158	ADJ %IMF
		100
GAIN	3.07	RIB FAT
		100
FRAME		RUMP FAT
		100
PROJ SC	40	CB INDEX
		192

RED TR IMPALA 167D

RED U-2 WILD THING 346X

RED REBEL CREEK FLASH BANG 12F

RED TG BLOCKANA 8Z

RED REBEL CREEK ASPEN 415B

RED RNC BLOCKANA 1W

	CE	BW	WW	YW	RADZ	DMI	SCR	DOC	CLAW	ANGLE	CW	MARB	REA	FAT	HPG	MCE	MILK	MW	MH
EPD	-4	4.3	54	99	0.24	0.93	1.54	23	0.48	0.52	50	0.17	0.19	-0.007	8	3	28	99	1.2
ACC	27	50	42	32	24	24	33	22	19	19	34	30	31	27	11	21	25	29	31
RANK	89	94	*9	*4	*6	95	*2	*4	75	63	*2	62	92	34	86	72	*11	*2	*1



73J

RED REBEL CREEK

James Bond

73J 2210482

10-04-2021

ROOK 73J

ULTRASOUND DATA		RATIO
BW	95	
ADJ205	697	RIBEYE
		103
ADJ 365	1082	ADJ %IMF
		113
GAIN	2.41	RIB FAT
		75
FRAME		RUMP FAT
		61
PROJ SC	37	CB INDEX
		240

RED TR IMPALA 167D

RED FEDES BIG SKY R9

RED REBEL CREEK FLASH BANG 12F

RED TOP GRADE LASSIE 129A

RED REBEL CREEK ASPEN 415B

RED TG LASSIE 135Y

	CE	BW	WW	YW	RADZ	DMI	SCR	DOC	CLAW	ANGLE	CW	MARB	REA	FAT	HPG	MCE	MILK	MW	MH
EPD	-8	3.4	48	85	0.23	0.49	0.94	14	0.56	0.54	39	0.44	0.58	-0.037	12	6	23	46	0.6
ACC	26	48	41	32	22	22	32	19	17	18	32	28	29	26	10	20	23	29	30
RANK	97	87	21	16	*10	68	24	42	98	75	*7	*10	*11	*2	*10	39	58	40	*10

USING EPD'S FOR BULL SELECTION

EPDs are calculated using pedigree, performance and genomic data. Canadian Angus members participate in the voluntary Performance Program through which they collect and submit performance data on fertility, calving ease, growth, structure, carcass quality, and feed efficiency for their calves. A big thank you to all our members who take the time to measure and record this data; without you we cannot generate the genetic selection tools that we do. Many members have started measuring and submitting phenotypes for the new traits introduced here. As you start calving, please do not forget to record teat and udder scores on your cows.

EPDs are a genetic selection tool that some producers appreciate and use to select their bulls.

Canadian Angus Association Genetic Evaluation Definitions

Production EPDs:

Calving Ease Direct (CED) EPD describes the percentage of expected unassisted births when a bull is exposed to first-time heifers. The higher the number, the higher the probability that first-time heifers bred to the bull in question will calve with no assistance. The EPD predicts the average difference in ease with which a sire's calves will be born when he is bred to first-calf heifers.

Birth Weight EPD (BW) EPD describes in pounds the difference in expected progeny weight, on average. A bull with a BW EPD of +4 will, on average, sire calves that are 2 pounds heavier than a bull with a BW EPD of +2 (given equal management).

Weaning Weight EPD (WW) EPD describes in pounds the difference in expected weaning weight in progeny, on average. WW EPD is a predictor of a sire's ability to transmit weaning growth to his progeny compared to that of other sires. A bull with a WW EPD of +50 will sire calves that are, on average, 20 pounds heavier at weaning than a sire with a WW EPD of +30 (given equal management).

Yearling Weight EPD (YW) EPD describes in pounds the difference in expected yearling weight in progeny, on average. YW EPD is a predictor of a sire's ability to transmit post weaning growth to his progeny compared to that of other sires. A bull with a YW EPD of +100 will sire calves that are, on average, 30 pounds heavier at weaning than a sire with a WW EPD of +70 (given equal management).

Residual Average Daily Gain (RADG) EPD describes an animal's ability to grow post weaning on a constant amount of feed. RADG EPD, expressed in pounds per day, is a predictor of a sire's genetic ability for postweaning gain in future progeny compared to that of other sires, given a constant amount of feed consumed. A bull with an RADG EPD of +1.5 will sire calves that, on average, will grow 1 extra pound per day more than calves from another bull with an RADG EPD of 0.5—on the same amount of feed.

Dry Matter Intake (DMI) EPD describes the feed intake potential for weaned calves from one sire compared to the feed intake potential of calves from another sire. This EPD is expressed in pounds per day. Weaned calves from Sire A with a DMI EPD of 0.50 will eat approximately 0.5 pounds of dry matter a day more than weaned calves from Sire B with a DMI EPD of 0.00. This EPD should also be used in conjunction with a growth EPD, such as YW EPD, as unlike RADG EPD, it does not include a growth component. Used independently of a growth EPD the DMI EPD selects solely for appetite.

Scrotal Circumference EPD (SC) EPD describes the difference in average scrotal circumference in sons. Expressed in centimetres, a sire with an SC EPD of 1.2 will, on average, have sons with scrotal circumference that is 1 centimetre larger than the sons from a sire with an SC EPD of 0.2. SC EPD has also been correlated with daughter's age at puberty and progeny fertility.

Docility (Doc) EPD is expressed as a difference in yearling cattle temperament, with a higher value indicating more favourable docility. It predicts the average difference of progeny from a sire in comparison with another sire's calves. In herds where temperament problems are not an issue, this expected difference would not be realized.

Claw Set (Claw) EPD is expressed in units of claw-set score, with a lower EPD being more favourable indicating a sire will produce progeny with more functional claw set. Ideally, toes are symmetrical, even and appropriately spaced.

Foot Angle (Angle) EPD is expressed in units of foot-angle score, with a lower EPD being more favourable indicating a sire will produce progeny with more ideal foot angle. The ideal is a 45-degree angle at the pastern joint with appropriate toe length and heel depth.

Carcass EPDs:

Carcass Weight (CW) EPD is expressed in pounds and is a predictor of the differences in hot carcass weight of a sire's progeny compared to progeny of other sires. A bull with a CW EPD of +30 will sire calves that, on average, will result in 10 pounds more hot carcass weight than the progeny of a bull with CW EPD of +20.

Marbling (Marb) EPD describes the marbling potential of calves from one bull compared to the calves from another bull, given the same management. This EPD is expressed as the difference in grade score. Given the same management, the calves from a bull with a Marb EPD of 0.6 will marble ½ a grade score better than the calves from a bull with a Marb EPD of 0.1.

Ribeye Area (RE) EPD describes in square inches the difference in ribeye area of a sire's progeny compared to progeny of other sires. **Fat Thickness (Fat) EPD** expressed in inches, describes the differences in back fat thickness at the 12th rib (as measured between the 12th and 13th ribs) of a sire's progeny compared to progeny of other sires.

Maternal EPDs:

Heifer Pregnancy (HPG) EPD is a selection tool to increase the probability or chance of a sire's daughters becoming pregnant as first-calf heifers at first exposure. A higher EPD indicates a higher probability of conception.

Calving Ease Maternal (CEM) EPD describes the probability of not requiring assistance when a bull's daughters calve for the first time. The higher the EPD, the higher the probability that a bull's daughters will not require assistance at calving time.

Milk EPD describes, in pounds, the portion of a calf's weaning weight attributed to milk and mothering ability. On average, daughters from a bull with a Milk EPD of +20 will contribute 5 pounds more to their calves' weaning weight than the daughters of a bull with Milk EPD of +15. Milk EPD is a threshold trait that should be maintained at a moderate level dependent on the management and environment of the herd.

Mature Weight (MW) EPD expressed in pounds, is a predictor of the difference in mature weight of daughters of a sire compared to the daughters of other sires.

Mature Height (MH) EPD expressed in inches, MH EPD is a predictor of the difference in mature height of a sire's daughters compared to daughters of other sires.

Rib Fat & Rump Fat – An external fat measurement taken between the 12th and 13th ribs, measured in inches.

Rump Fat - An external measurement taken between the hooks and pins, measured in inches. The rump fat and the rib fat measurements are used to determine the overall external body fat.

REA (in²) – Area of the longissimus muscle, measured in square inches. The trait is moderately to highly heritable and gives an indication of overall carcass muscling.

%LMY – Cut-ability, is the percentage of lean meat yield in the carcass

%IMF – Percentage of fat in the ribeye area muscle

